



# CX Pro series



# Best value entry level desktop printer



Best Label-saving Protocol!



## Before



Last generation label printer needs tedious, costly and time consuming setting procedures.

## After

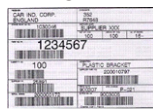


Using smarter new generation desktop printer to save time and money.

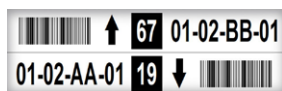
## Application



### Logistics



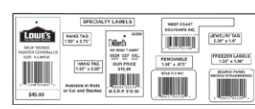
### Warehouse



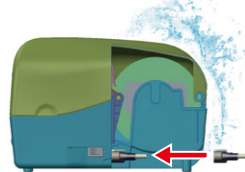
### Manufacturing



### Service Bureau



## Feature-rich to make daily work simple and easy



### Shell Suit design

Interface roof feature can avoid interface from water spill damage and keep machine close to wall, reducing operating space.



### Easy to load media

Large loading space for easy installation of the media and ribbon.



### Durable life

Inherited the turtle spirit, integrated structure makes CX Pro series solid and robust.



### Performance enhance

Expanded SDRAM and Flash ROM can store more fonts, forms, graphics.

| Print Specifications | CX-2040 Pro                       | CX-2140 Pro | CX-3040 Pro          | CX-3140 Pro |
|----------------------|-----------------------------------|-------------|----------------------|-------------|
| Printing Method      | Direct Thermal & Thermal Transfer |             |                      |             |
| Printing Resolution  | 203 dpi (8 dots/mm)               |             | 300 dpi (12 dots/mm) |             |
| Printing Speed       | Max. 6 ips                        |             | Max. 4 ips           |             |
| Printing Length      | Max. 100"(2540 mm)                |             | Max. 50"(1270 mm)    |             |
| Printing Width       | Max. 4.25"(108 mm)                |             | Max. 4.16"(105.7 mm) |             |
| Memory               | 128MB SDRAM, 128MB Flash ROM      |             |                      |             |
| CPU Type             | 32 bit RISC microprocessor        |             |                      |             |

| Consumables Specifications |  |  |  |  |
|----------------------------|--|--|--|--|
| Sensors                    | Reflective sensor x 1 (movable) & Transmissive sensor x 1 (Center fixed)   |  |  |  |
| Media Type                 | Roll-feed, die-cut, continuous, fan-fold, black mark, tags, ticket in thermal paper or plain paper   |  |  |  |
| Media                      | Max. width: 4.65" (118mm). Min. width: 0.8" (20mm). Thickness: 0.0024"~0.008" (0.06mm~0.2mm)<br>Max. roll capacity (OD): 5"(127 mm) Core size 1"(25.4mm)<br>Max. roll capacity (OD): 4.5"(114.3 mm) Core size 0.5"(12.7mm)<br>Max. roll capacity (OD): 4.7"(120 mm) Core size 1.5"(38.1mm) |  |  |  |
| Ribbon                     | Ribbon width: 1"~4.33"(25.4mm~110mm), Ribbon length: Max. 300m.<br>Core size ID: 1"(25.4mm), optional: 0.5"(12.7mm), Core width: 2.6"(67mm)<br>Wax, Wax/Resin, Resin (Ribbon wound ink-side out or ink-side in: auto-detect)   |  |  |  |

| Fonts & Symbolologies |  |  |  |  |
|-----------------------|--|--|--|--|
| Fonts                 | Internal character sets standard<br>5 alpha-numeric fonts from 0.049"H ~ 0.23" H (1.25mm ~ 6.0mm)<br>Internal fonts are expandable up to 24x24 4 direction 0 ~ 270 rotation<br>Soft fonts are downloadable<br>Ability to print any Windows True Type font easily. Support scalable font<br>GB 18030 Standard (Chinese coded character set) support   |  |  |  |
| 1D Barcodes           | PPLA: Code 39, UPC-A, UPC-E, Code 128 subset A/B/C, EAN-13, EAN-8, HBIC, Codabar, Plessey, UPC2, UPC5, Code 93, Postnet, UCC/EAN-128, UCC/EAN-128 K-MART, UCC/EAN-128 Random weight, Telepen, FIM, Interleaved 2 of 5 (Standard/with modulo 10 checksum / with human readable check digit/ with modulo 10 checksum & shipping bearer bars), and GS1 Data bar (RSS)<br>PPLB: Code 39, UPC-A, UPC-E, Matrix 2 of 5, UPC-Interleaved 2 of 5, Code 39 with check sum digit, Code 93, EAN-13, EAN-8 (Standard, 2/5digit add-on), Codabar, Postnet, Code128 subset A/B/C, Code 128 UCC (shipping container code), Code 128 auto, UCC/EAN code 128 (GS1-128), Interleave 2 of 5, Interleaved 2 of 5 with check sum, Interleaved 2 of 5 with human readable check digit, German Postcode, Matrix 2 of 5, UPC Interleaved 2 of 5, EAN-13 2/5 digit add-on, UPCA 2/5 digit add-on, UPCE 2/5 digit add-on, and GS1 Data bar (RSS)<br>PPLZ: Code39, UPC-A, UPC-E, Postnet, Code128 subset A/B/C, Interleave 2 of 5, Interleaved 2 of 5 with check sum, Interleaved 2 of 5 with human readable check digit, Code 93, Code 39 with check sum digit, MSI, EAN-8, Codabar, Code 11, EAN-13, Plessey, GS1 Data bar (RSS), Industrial 2 of 5, Standard 2 of 5, and Logmars |  |  |  |
| 2D Barcodes           | PPLA: MaxiCode, PDF417, Data Matrix (ECC 200 only), QR code, and Composite Codes<br>PPLB: MaxiCode, PDF417, Data Matrix (ECC 200 only), QR code, and Composite Codes<br>PPLZ: QR code, PDF417, Data Matrix (ECC 200 only), and MaxiCode Composite Codes  |  |  |  |
| Graphics              | PPLA: PCX, BMP, IMG, HEX and GDI format files PPLB: PCX, BMP, Binary Raster, and GDI PPLZ: GRF, Hex and GDI  |  |  |  |
| Emulation             | PPLA, PPLB, PPLZ   |  |  |  |

| Interface Characteristics and Integration |  |  |            |  |
|---|--|--|------------|--|
| Operation Interface                       | LED Indicator x 2, Button(Feed) x 1  |  |            |  |
| Communication Interface                   | USB device   | Ethernet, USB device, RS-232, USB host | USB device | Ethernet, USB device, RS-232, USB host |
| Drivers                                   | Windows Driver for Windows Vista/Win7/Win8/Win10, LINUX Driver, macOS Driver, Raspberry Pi Driver        |  |            |  |
| Software                                  | BarTender, Printer Tool, Font Utility  |  |            |  |
| Application                               | iLabelPrint+   |  |            |  |
| Database Link                             | Argobar Pro support ODBC Database Connection: Excel, CSV, MS Access, MS SQL, Oracle MySQL, dBASE (*.dbf) |  |            |  |

| Operating & Environment Characteristics |   |  |  |  |
|---|---|--|--|--|
| Power Source                            | Universal Switching Power supply. AC input voltage: 100~240V, 50~60Hz. DC Output: 24V, 2.4A                             |  |  |  |
| Operation Environment                   | Operation Temperature: 40°F~100°F (4°C~38°C), 10% ~ 90% non-condensing,<br>Storage Temperature: -4°F~122°F (-20°C~50°C) |  |  |  |
| Agency Listing                          | CE, FCC, cULus, RoHS, BIS, BSMI, KC   |  |  |  |

| Physical Characteristics |                             |  |  |  |
|--------------------------|-----------------------------|--|--|--|
| Printer Dimensions       | W 226mm x H 188mm x D 276mm |  |  |  |
| Printer Weight           | 4.6 lbs (2.1 kg)            |  |  |  |

\*Argox reserves the right to enhance and modify the specification without prior notice. Please check Argox sales representative for most updated specifications.



**Argox Information Co., Ltd.**  
 8F., No. 28, Baogao Rd., Xindian Dist., New Taipei City 231029, Taiwan (R.O.C.)  
 Tel: +886-2-8912-1121 Fax: +886-2-8912-1124 <https://www.argoxt.com> <https://www.youtube.com/user/argoxtmkt>  
 Copyright © 2024. Argox Information Co., Ltd. All Rights Reserved.

Consult your local Argox business partners for location and contacts.

